

Choose Delaware

Where the world chooses to do business



Location



Center of largest consumer market in the United States



Close proximity to major airports, with international and domestic cargo capabilities



Cost-effective location along I-95 corridor between Washington, D.C., and Boston



Rail freight services throughout the state

Passenger rail hub

52
Million + people within 250 miles

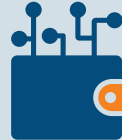
Industry Strengths

1



Advanced chemicals

2



Financial services and fintech

3



Distribution and logistics

4



Agriculture and agriscience

5



Life sciences, biotech and pharmaceuticals

6



Business and corporate services

7



Advanced manufacturing and materials

Business Environment

- Ranked #3 for most competitive business environment by U.S. News and World Report (2023)
- #2 for overall corporate tax favorability, according to Location Matters 2021
- Over 68% of Fortune 500 companies are incorporated here
- Undisputed leader in corporate and legal services in the United States
- No sales tax, inventory tax or value-added tax
- Competitive labor costs
- Refundable R&D Tax Credit
- Business-friendly, accessible leaders and elected officials



Talent Pool

- Home to top-level and diverse talent from around the world
- 5th highest concentration of employed Ph.D.s in health, science, and engineering in the United States
- Highest concentration of chemists, chemical engineers, and workers in the financial services industry of any state in the nation
- More than 100 colleges and universities within a two-hour radius

About DPP

Delaware Prosperity Partnership leads Delaware's economic development efforts to attract, grow and retain businesses; to build a stronger entrepreneurial and innovation ecosystem; and to support private employers in identifying, recruiting and developing talent.

Living in Delaware

- Family-friendly beaches
- 17 state parks and more than 150 miles of recreational trails
- Easy access to amenities in Philadelphia, Baltimore, New York and Washington, D.C.

Contact

W. Kurt Foreman
President & CEO
Delaware Prosperity Partnership
kforeman@ChooseDelaware.com

Becky Harrington
Vice President, Business Development
Delaware Prosperity Partnership
bharrington@ChooseDelaware.com

[choosedelaware.com](https://www.choosedelaware.com)

